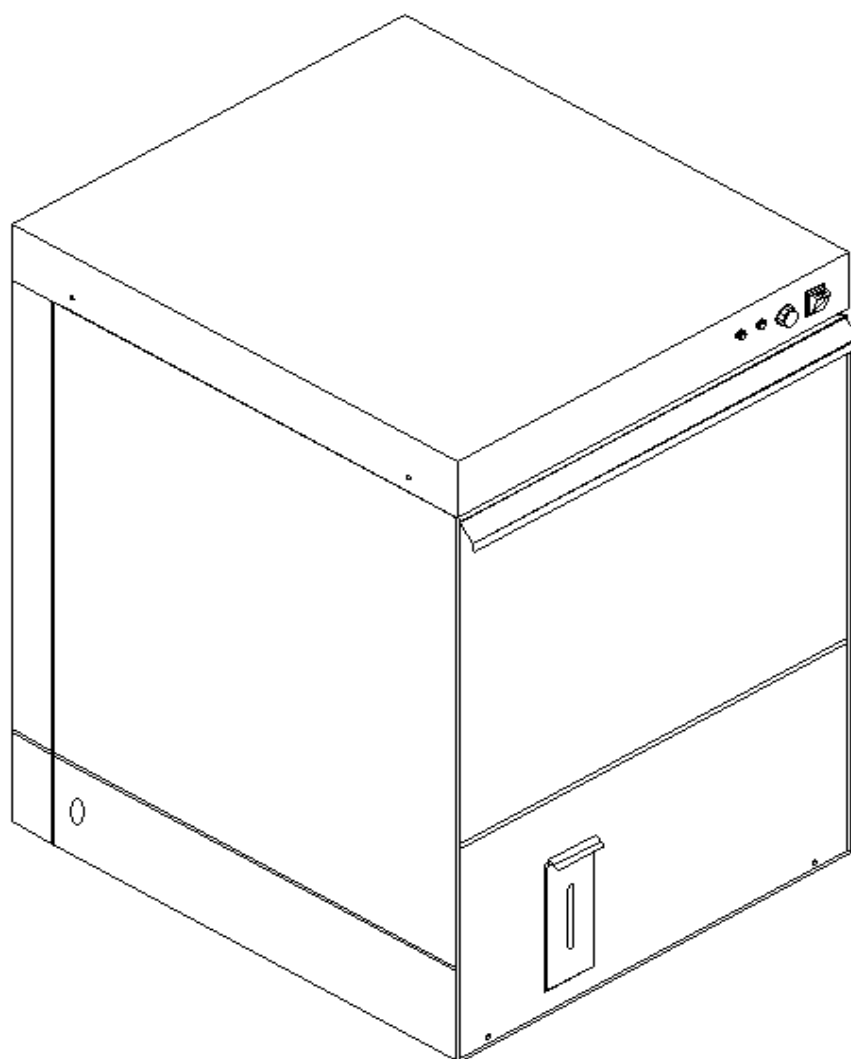


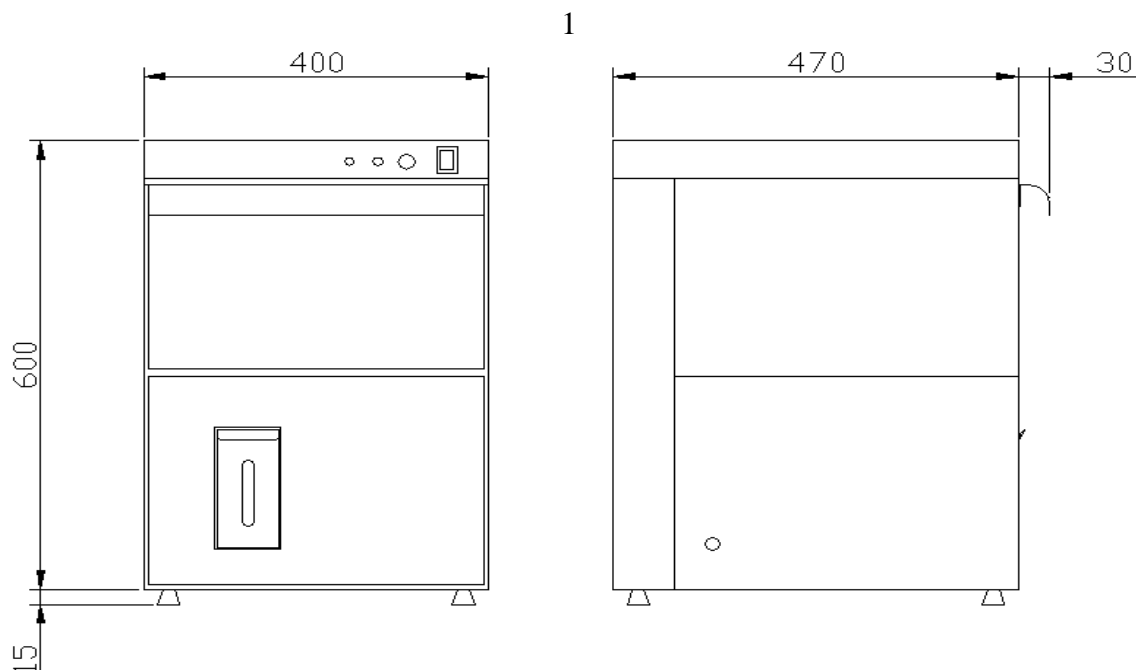
# INSTRUCTION MANUAL

## **DISHWASHER**

### BIANCA 35



	<b>Page</b>
<b>1. Technical Details</b>	<b>1</b>
<b>2. Hydraulic Connection Plan</b>	<b>2</b>
<b>3. Electric Connection Plan</b>	<b>3</b>
<b>4. Explosion View of the appliance.</b>	<b>4</b>
<b>5. Upper and lower nozzle explosion view</b>	<b>5</b>
<b>6. Drying Rinse Pump Expl. View &amp; door part</b>	<b>6</b>
<b>7. Spare Parts List.</b>	<b>7</b>
<b>8. Use Instructions.</b>	<b>8</b>



## 1. DIMENSIONS.

	APPLIANCE	PACKAGE
DEPTH	500 mm	600 mm
WIDTH	400 mm	500 mm
HEIGHT	615 mm	670 mm
WEIGHT	18,5 kgr	20 kgr

## 2. ELECTRICAL DETAILS.

VOLTAGE	230V/50Hz
BUCKET RESISTANCE	2500W/230V
BOILER RESISTANCE	2000W/230V
PUMP POWER	0,37 HP (270W)

## 3. APPLIANCE'S CAPACITY.

PLATES Ø165	450 PCS/HOUR
GLASSES Ø80	450 PCS/HOUR
TRAYS 380X200	200 PCS/HOUR

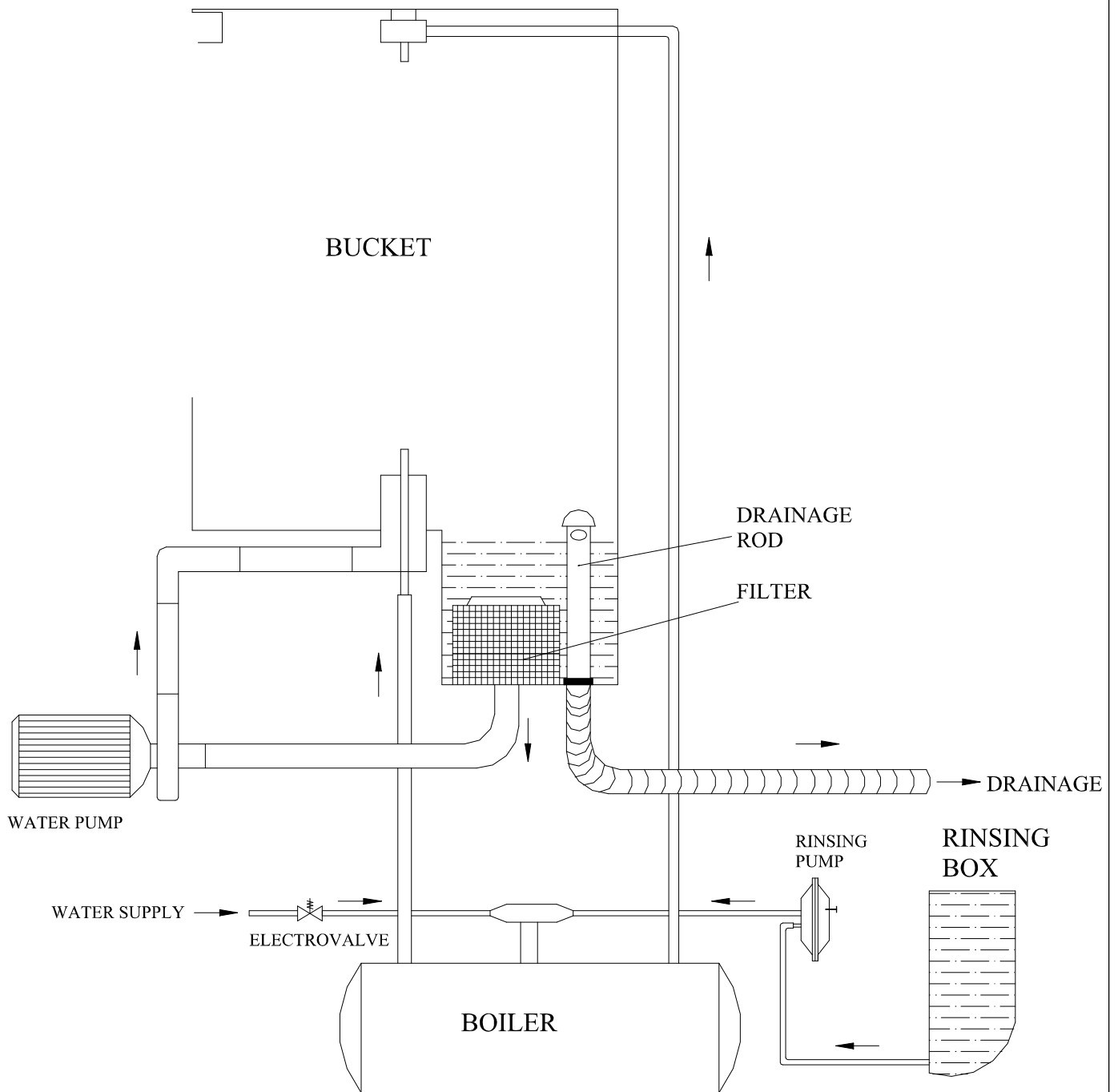
## 4. OPERATION DATA.

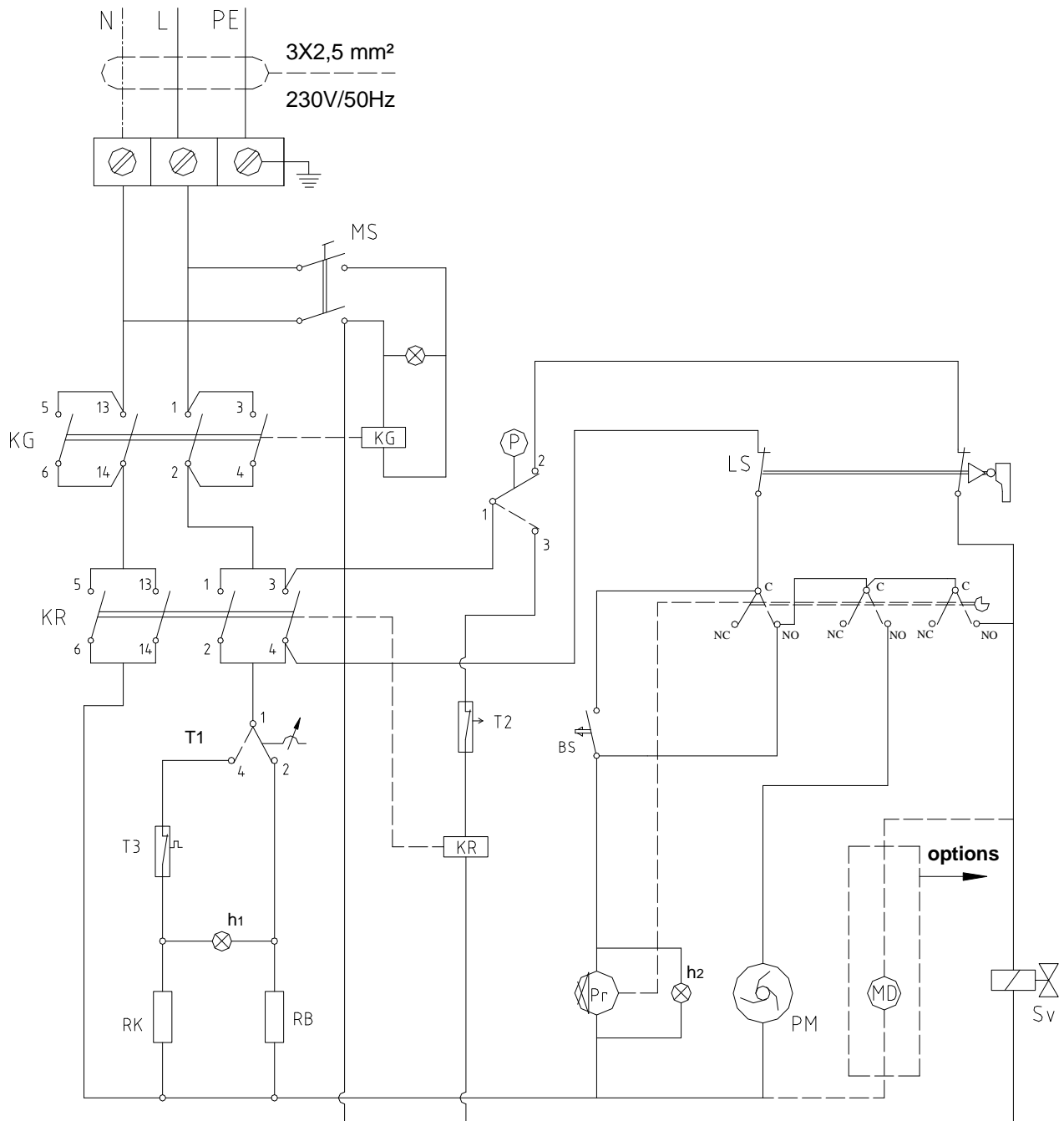
Water supply pressure : min 0,2 MPa (2 bar) - max 0,5 MPa (5 bar)  
 Hot water supply: max 65 °C (NOT RECOMMENDED)  
 Water consumption / each operation : ~ 2 lt  
 Program duration / each operation : 2 min  
 Water temperature in the bucket : 65 °C  
 Water temperature in the boiler : 30 - 90 °C

## 5. CONSTRUCTION.

The appliance's casing entirely made of stainless steel, of thickness 1 mm. The electrical connection is made by NYAF cables of quadrate 2,5 mm<sup>2</sup>. The supply cable is of quadrate 3x2,5mm<sup>2</sup> with plug. The whole appliance is grounded.

The washing machine is a Class I appliance and is resistant to humidity according to IP X 1.

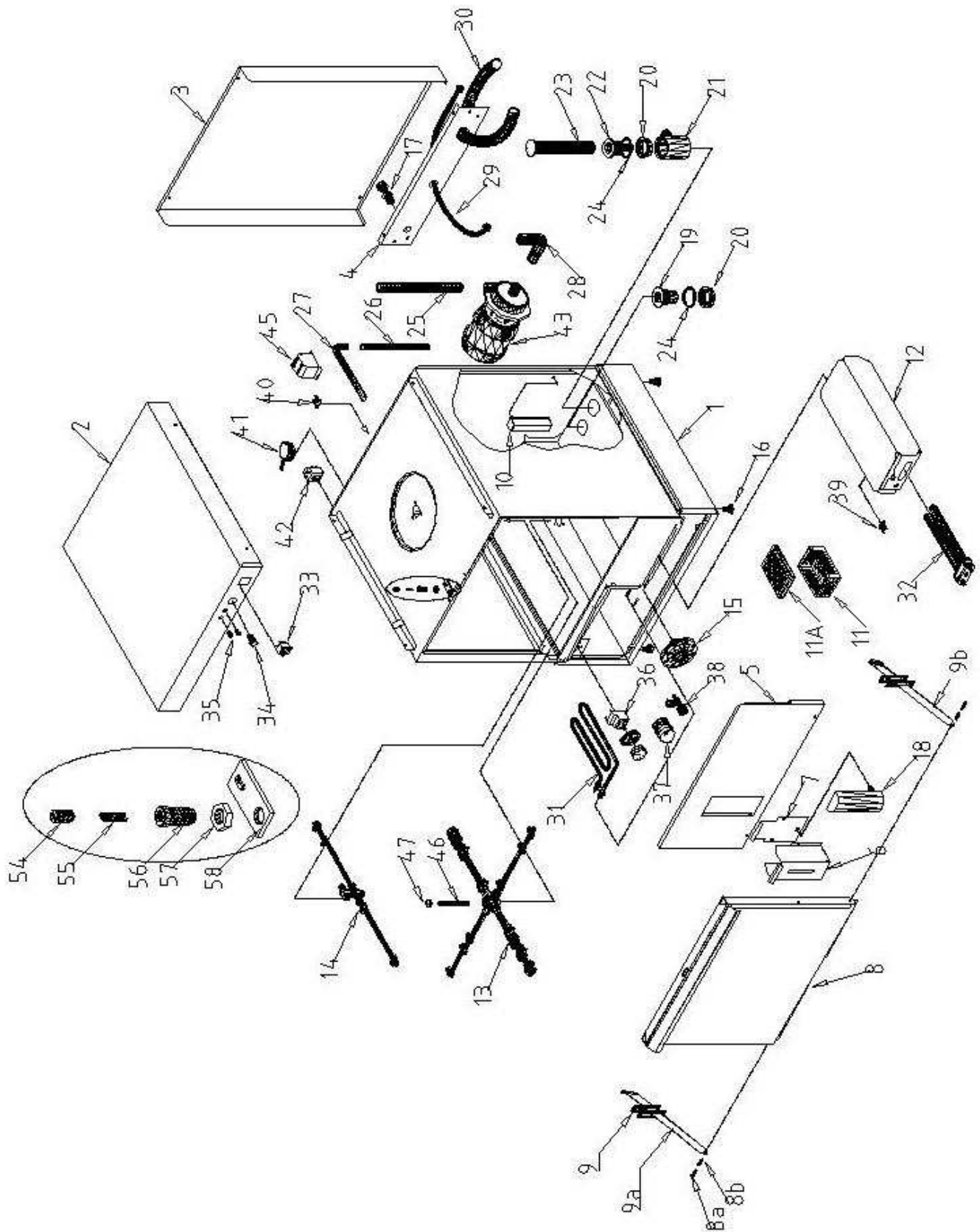




Symbol	MEMORANDUM		
MS	Switch ON/OFF 16(4)A/250V		
P	Piesostat 16(4)A/250V	T2	Thermal safety 110 C 16A/250V T20
Pr	Programmizer 120 sec 230V 50/60HZ T85	T3	Contact thermostat 65 C 16A/250V T120
LS	Door microswitch 15(4)A/250V T125	BS	Start button 10A/250V T120
PM	Water pump 230V/270W 50/60HZ 2800RPM	h1	Heating element operation pilot lamp 230V / T120
SV	Electrovalve Tm 90 C 3/5min 230V	h2	Programmizer pilot lamp 230V / T120
RB	Boiler heating element 2000W/230V	KR	Heating element relay 230V , 50/60HZ AC1-20A / T120
Rk	Bucket heating element 2500W/230V	KG	ON/OFF relay 230V , 50/60HZ AC1-20A / T120
T1	Thermostat 30-90 C 16(5)A/250V T120 , (EGO)	MD	Measure pump

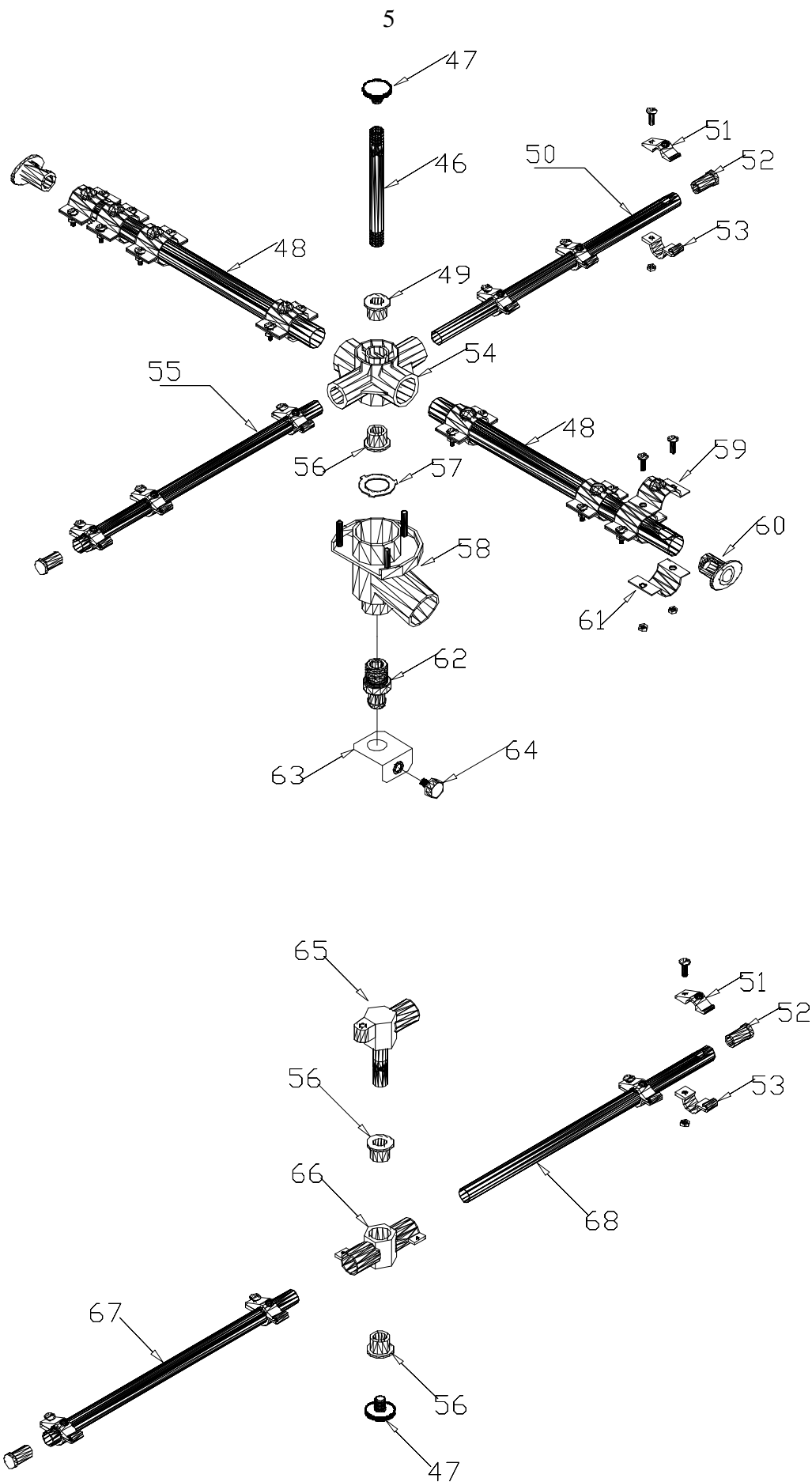
DESIGNATION: ELECTRIC CONNECTION  
PLAN

APPLIANCE: DISHWASHER  
BIANCA 35



DESIGNATION: EXPLOSION VIEW OF  
THE APPLIANCE

APPLIANCE: DISHWASHER  
BIANCA 35



DESIGNATION: EXPLOSION VIEW OF  
THE UPPER AND LOWER NOZZLE

APPLIANCE: DISHWASHER  
BIANCA 35





No	DESIGNATION	CODE Nr.
13	COMPLETE LOWER NOZZLE	-
14	COMPLETE UPPER NOZZLE	-
15	COMPLETE DRYING RINSE PUMP	54.900.001
23	DRAINAGE ROD	30.012.185
31	BUCKET HEATING ELEMENT 2500W/230V	30.008.444
32	BOILER HEATING ELEMENT 2000W/230V	30.008.591
35	PILOT LAMP	30.008.091
36	THERMOSTAT 30 – 90 °C	30.008.103
37	PROGRAMMER	30.008.397
38	ELETR/VALVE G1/2"	30.008.297
39	THERMAL SAFETY 110 °C	30.008.441
40	CONTACT THERMOSTAT 65 °C	30.008.443
41	PIESOSTAT	30.008.450-
42	DOOR MICROSWITCH	30.008.455
43	COMPLETE PUMP	30.008.006
49	LARGE BEARING	54.125.002
56	SMALL BEARING	54.125.001
59	WASH NOZZLE	30.012.052
51	WASH OFF NOZZLE	30.012.049
76	PISTON GASKET	30.012.114
82	ONE WAY NOZZLE	30.012.104
83	FILM	30.012.046
73	FILTER NET	30.012.153
84	DRYING RINSE PUMP SPRING	30.014.007
89	DOOR SWITCH MECHANISM SPRING	24.014.008

NOTICE: Any of the spare parts can be ordered under the code number given on the explosion view.

**This instructions manual is directed to qualified personnel with the appropriate training. Please read carefully these instructions in order to avoid damages or accidents.**

## **1. Purpose and Operation's Principals.**

This dishwasher is an efficient, economic and easy to use appliance, made for professional use for washing glasses (up to 165 mm high), plates (up to  $\Phi 165$  mm) and trays (dimensions 330X200mm) .

Its operation principal is based on spraying the glasses/plates/trays with water from below for the washing, and from both below and above for the washing off, by using rotating nozzles. Washing is made by recycling the water in the bucket and rinsing using clean water coming from the water network.

The water is heated in the boiler and in the bucket of appliance with heating elements.

The water's temperature in the bucket and the boiler is controlled by two thermostats. In addition the heating element of the boiler is protected by one manually reset thermal safety. In any case, the heating elements do not operate unless the required supply of water is present in the washing machine, which is controlled by a piesostat.

In every operation cycle the appropriate dose of drying rinse is fed in for quick drying of the glasses/plates/trays using a drying rinse pump, set for reaction from 2 to 5 bar water network pressure.

All operations are automated.

## **2. Placing, connection and protection.**

After unpacking the appliance make sure that there are no damages in the casing of the appliance. In case of any kind of damage please direct to your supplier to replace the appliance.

The dish washer has to be placed on a stable ground having, the possibility to be connected to the water net (G3/4''), drainage (sink or direct drainage) and to the electric power supply (suko plug). The electrician performing the installation must check the connections between the power plug and the outlet so neutral is connected to neutral and phase to phase.

In case the water supply network shows feeding water flunctuations or very low pressure, use a one-way supply valve.

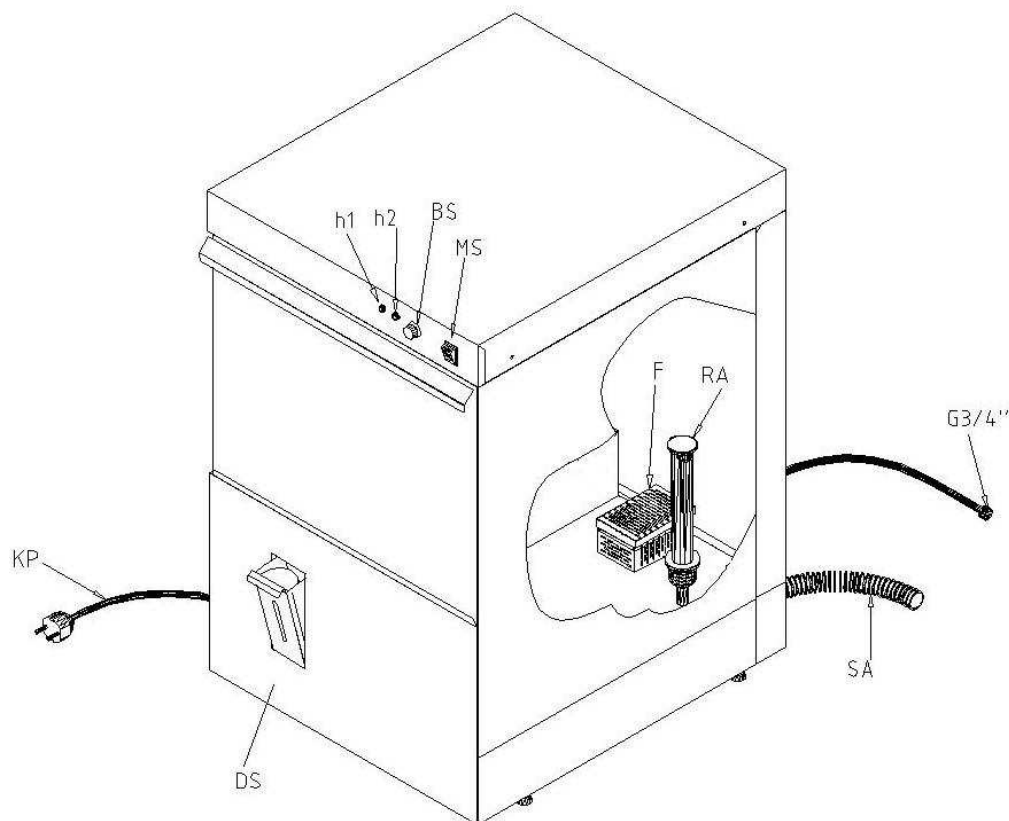
For isodynamic grounding use the screw welded next to the ground sign.

- remove from the surface the protective film (and from the internal side of the door).
- Place it at the working position and make it stable with the adjustable feet (screw and unscrew).
- open the door and take out the baskets.
- make sure that the drainage rod RA and the filter F are in their position (see pag. 9).
- put the drainage tube SA to the point for drainage.

**WARNING !** This point of the placing of the drainage rod must to be not higher than 10 cm from the bottom of the dishwasher.

- Connect the water supply tube with the water net using the tap G3/4'' and open it .
- Put the supply cord KP into the plug. (INDICATION: NONE)
- open the door DS, fill in with rinsing and close it.

The drying rinse pump uses for each cycle, dependent on water pressure, around 3-6 grams of drying agent.



### 3. First operation.

- α) Filling the bucket with water  
The bucket is filled with water by rotating nozzles.



**The door must be closed!**

- press the main switch ( MS) to position 1.  
Indication: the switch lightens and the machine is getting filled with water.  
First is getting filled the boiler and then through the nozzles is getting filled the bucket , making the noise of spraying water.

#### NOTICE:

- When the water level reaches the right height, the water flow stops .the pilot lamp h<sub>1</sub> lights on as indication that the water in the bucket is getting heated.
- The pilot lamp h<sub>1</sub> indicates generally that one heating element is in operation (of the bucket or of the boiler).
- When the pilot lamp lights off, indicates that the temperature of the water in the bucket and in the boiler is right.

**b) WASHING**

- open the door and put in the bucket the liquid detergent (100-200 gr)  
**ATTENTION!** The detergent should not make too much foam!
  - Before you put in the basket, the pilot lamp  $h_1$  must to be off, which means that the required temperature of the water in the boiler and the bucket has been succeeded.
  - Put in the basket and close the door.
  - Press the start button ( BS ) for 1 second and the program starts.
- Indication:** the pilot lamp  $h_2$  lids on and remains on during the washing.

The duration of the program is 2 minutes

- By finishing your work, push the switch (MS) to the position "0".
- Indication :** the lighting turns off.

**NOTICE:**

- a) After 5-6 washings put in detergent again.
- b) If the door is open the program does not operate
- c) If the door opens during the washing operation, the dishwasher stops. After closing the door continues from the point it stopped.
- d) In case that the pump do not work on the start. Please take the plastic cover from the side out and by using a screwdriver rotate the rotor of the motor. This is only for an authorized person.

**4. APPLIANCE'S CLEANING**

- Take out the drainage rod.
- Take out the filter (by pulling it up) and clean it with running water.
- Wash off the bucket by using running water and wipe it with a pry cloth.
- If the siphon is clogged use running water with pressure.
- Put back the drainage rod and the filter to their position.

**5. MALFUNCTION**

In any case of malfunction or for any change of the supply cable, call an authorized service.



**Before every reparation disconnect the appliance from the electricity supply (you have to pull out the plug).**